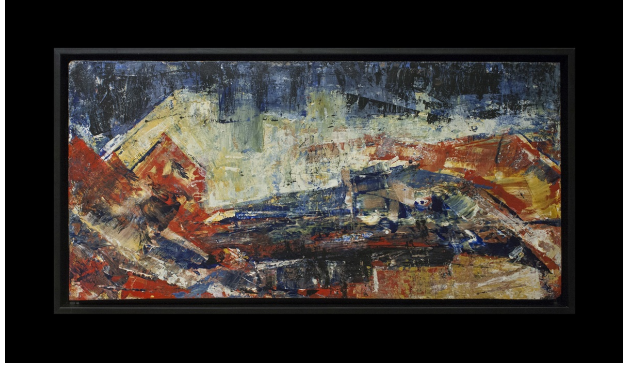




George Josimovich (American, 1894 - 1987)
Untitled (Mountain Landscape), ca. 1950s
Oil on Masonite
9 1/2 x 20 inches (framed 10 3/4 x 21 inches)
Provenance: Estate of the artist.
#13377



George Josimovich

George Josimovich was born in Sremska Mitrovica, Yugoslavia in 1894. He emigrated to the U.S. in 1908 and began his studies at the Art Institute of Chicago in 1914. In 1919, Josimovich was greatly influenced by artist and instructor George Bellows.

From 1926-1927, Josimovich maintained a studio in Paris and exhibited at Galerie D'Art Contemporain. Upon Josimovich's return to Chicago in the late 1920s, he became an important force in Chicago Modern painting. He exhibited at the Art Institute of Chicago, The Salons of America and The Carnegie Institute, among others. He died in Newark, NJ in 1987.